



Flight Plan & Site Survey

Created using **RPAS Wilco**[®]

Operation Name:	Bramela
Pilot Name:	[REDACTED]
Pilot Certificate:	[REDACTED]
Flight Start:	April 4, 2023 12:57 PM
Flight End:	April 4, 2023 2:57 PM
Flight Area (Latitude):	43° 46' 9.60" N (43.769)
Flight Area (Longitude):	79° 46' 19.30" W (-79.772)
Altitude - Radius:	Alt: 600 ft - Rad: 926.0 m (0.5 nm)
Airspace:	UNCONTROLLED
FIR - Contact:	CZYZ - 905-676-4509

Please ensure you received all required authorizations prior to flight.

Disclaimer

This Site Survey was created using RPAS Wilco by AIM Robotics. The flight plan contained is intended only for RPAS flights on the date/time and location specified. The user accepts all responsibility for the accuracy and completeness of the information contained.

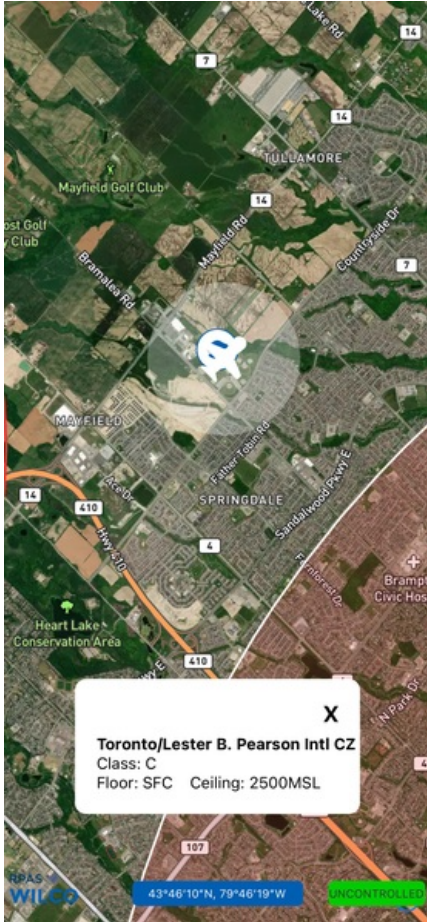
For the complete Terms & Conditions, see

<https://rpswilco.com/#/tnc>



Included

- Site Survey
- Obstacles (if available)
- Nearby Aerodromes
- Canadian Aviation Regulations
- GFA
- Aerodrome Supplements
 - METAR & TAF (if available)
 - NOTAMS
 - CFS

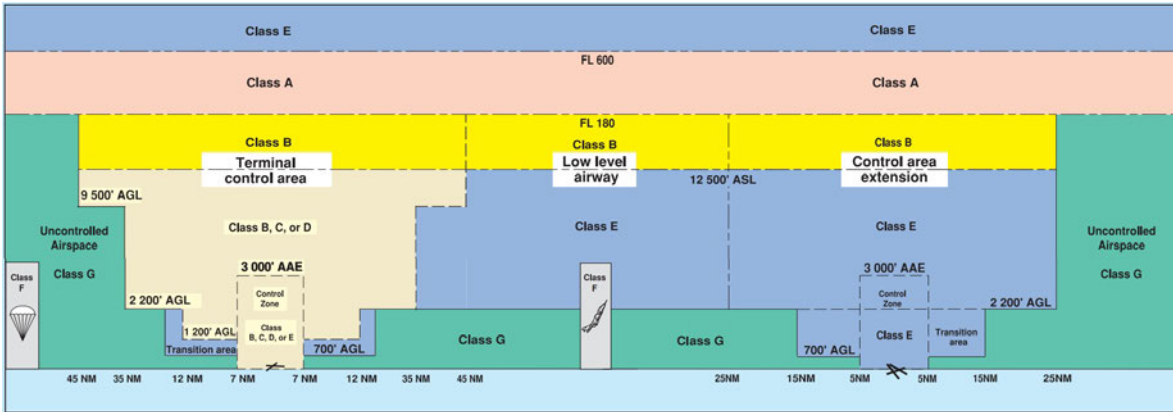
Flight Map



MAP Details

	Latitude	Longitude
 MODEL	43° 46' 9.60" N (43.769)	79° 46' 19.30" W (-79.772)
 Pilot	43° 46' 13.20" N (43.7703)	79° 46' 22.90" W (-79.773)

Airspace Classification



Overlying Airspaces

Class	Name	Floor	Ceiling
B	Southern Ontario Low Level Control Area CAE	12500MSL	18000MSL
E	Southern Ontario Low Level Control Area CAE	2500MSL	6500MSL
E	Southern Ontario Low Level Control Area CAE	6500MSL	12500MSL
E	Toronto XPNDR MANDTRY	6500MSL	12500MSL
C	Toronto, ON TCA	1700MSL	2000MSL
C	Toronto, ON TCA	2000MSL	2500MSL
B	Windsor, ON TA	12500MSL	18000MSL
E	Windsor, ON TA	700AGL	12500MSL
C	Toronto, ON TCA	2500MSL	3500MSL
C	Toronto, ON TCA	3500MSL	4500MSL
C	Toronto, ON TCA	4500MSL	12500MSL

Nearest Aerodromes & Distance from Operation

BRAMPTON CALEDON (CNC3 AERODROME Cert)	Lat: 43.76	Long: 79.874	8.254 KM	4.46 NM
BRAMPTON (NATIONAL D) (CPC4 HELIPOINT Reg)	Lat: 43.833	Long: 79.701	9.089 KM	4.91 NM
BOLTON (CNB2 HELIPOINT Cert)	Lat: 43.852	Long: 79.695	11.077 KM	5.98 NM
LESTER B. PEARSON INTL (CYYZ AERODROME Cert)	Lat: 43.676	Long: 79.63	15.426 KM	8.33 NM

Canadian Aviation Regulations

Division III — General Operating and Flight Rules

For full listing please visit <https://laws-lois.justice.gc.ca/eng/regulations/SOR-96-433/FullText.html#s-901.27>

Visual Line-of-sight

- **901.11 (1)** Subject to subsection (2) no pilot shall operate a remotely piloted aircraft system unless the pilot or a visual observer has the aircraft in visual line-of-sight at all times during flight.
- **(2)** A pilot may operate a remotely piloted aircraft system without the pilot or a visual observer having the aircraft in visual line-of-sight if the operation is conducted in accordance with a special flight operations certificate — RPAS issued under section 903.03.

Procedures

- **901.23 (1)** No pilot shall operate a remotely piloted aircraft system unless the following procedures are established:
 - **(a)** normal operating procedures, including pre-flight, take-off, launch, approach, landing and recovery procedures; and
 - **(b)** emergency procedures, including with respect to
 - **(i)** a control station failure,
 - **(ii)** an equipment failure,
 - **(iii)** a failure of the remotely piloted aircraft,
 - **(iv)** a loss of the command and control link,
 - **(v)** a fly-away, and
 - **(vi)** flight termination.
- **(2)** If the manufacturer of the remotely piloted aircraft system provides instructions with respect to the topics referred to in paragraphs (1)(a) and (b), the procedures established under subsection (1) shall reflect those instructions.
- **(3)** No pilot shall conduct the take-off or launch of a remotely piloted aircraft unless the procedures referred to in subsection (1) are reviewed before the flight by, and are immediately available to, each crew member.
- **(4)** No pilot shall operate a remotely piloted aircraft system unless the operation is conducted in accordance with the procedures referred to in subsection (1).

Site Survey

901.27 No pilot shall operate a remotely piloted aircraft system unless, before commencing operations, they determine that the site for take-off, launch, landing or recovery is suitable for the proposed operation by conducting a site survey that takes into account the following factors:

- **(a)** the boundaries of the area of operation;
- **(b)** the type of airspace and the applicable regulatory requirements;
- **(c)** the altitudes and routes to be used on the approach to and departure from the area of operation;
- **(d)** the proximity of manned aircraft operations;
- **(e)** the proximity of aerodromes, airports and heliports;
- **(f)** the location and height of obstacles, including wires, masts, buildings, cell phone towers and wind turbines;
- **(g)** the predominant weather and environmental conditions for the area of operation; and
- **(h)** the horizontal distances from persons not involved in the operation.

Operations at or in the Vicinity of an Aerodrome, Airport or Heliport

- **901.47 (1)** No pilot shall operate a remotely piloted aircraft at or near an aerodrome that is listed in the *Canada Flight Supplement* or the *Water Aerodrome Supplement* in a manner that could interfere with an aircraft operating in the established traffic pattern.
- **(2)** Subject to section 901.73 no pilot shall operate a remotely piloted aircraft at a distance of less than
 - **(a)** three nautical miles from the centre of an airport; and
 - **(b)** one nautical mile from the centre of a heliport.
- **(3)** No pilot shall operate a remotely piloted aircraft at a distance of less than three nautical miles from the centre of an aerodrome operated under the authority of the Minister of National Defence unless the operation is conducted in accordance with a special flight operations certificate — RPAS issued under section 903.03.

Records

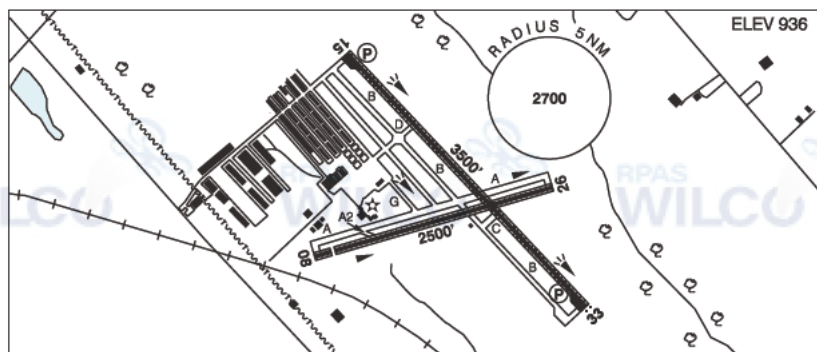
- **901.48 (1)** Every owner of a remotely piloted aircraft system shall keep the following records:
 - **(a)** a record containing the names of the pilots and other crew members who are involved in each flight and, in respect of the system, the time of each flight or series of flights and
 - **(b)** a record containing the particulars of any mandatory action and any other maintenance action, modification or repair performed on the system, including
 - **(i)** the names of the persons who performed them,
 - **(ii)** the dates they were undertaken,
 - **(iii)** in the case of a modification, the manufacturer, model and a description of the part or equipment installed to modify the system, and
 - **(iv)** if applicable any instructions provided to complete the work.
- **(2)** Every owner of a remotely piloted aircraft system shall ensure that the records referred to in subsection (1) are made available to the Minister on request and are retained for a period of
 - **(a)** in the case of the records referred to in paragraph (1)(a), 12 months after the day on which they are created; and
 - **(b)** in the case of the records referred to in paragraph (1)(b), 24 months after the day on which they are created.
- **(3)** Every owner of a remotely piloted aircraft system who transfers ownership of the system to another person shall, at the time of transfer, also deliver to that person all of the records referred to in paragraph (1)(b).

ONTARIO

AERODROME/FACILITY DIRECTORY

BRAMPTON-CALEDON ON

CNC3



REF	N43 45 35 W79 52 26 10°W UTC-5(4) Elev 936' VTA A5000 LO6 T2 CAP
OPR	Brampton Flying 905-838-1400 Cert Opr ltd hrs
PF	B-1,2 C-3,4,5,6
CUST	AOE/CAN
FLT PLN	<p>FIC London 866-WXBRIEF (Toll free within Canada) or 866-541-4104 (Toll free within Canada & USA)</p> <p>ACC Toronto 905-676-4590/4591/4592 or 888-217-1241</p> <p>WX WxCam</p> <p>DUAT Flying Club</p>
SERVICES	<p>FUEL 100LL</p> <p>OIL All</p> <p>S 1,2,3,4,5,6</p>
RWY DATA	Rwy 15(146°/33(326°) 3500x75 ASPH/GRASS, centre 40' asphalt Rwy 08(081°/26(261°) 2500x75 ASPH/GRASS, centre 40' asphalt Thld 08 displ 191'.
RWY CERT	Rwy 15/33 AGN I Rwy 08/26 AGN I
RCR	Opr Rws rstd to acft 12,500 lbs and under. Ltd win maint
LIGHTING	08-(TE ME), 15-(TE HI) AP, 26-(TE ME), 33-AS(TE HI) AP ARCAL-123.3 type K Win PN
COMM	ATF UNICOM ltd hrs O/T tfc 123.3 5NM up to 2500 ASL excluding hat portion which penetrates Toronto class C Airspace
PRO	Call opr prior to ARCAL ops when win wx might affect rwy cond. Due to close proximity to Toronto/Lester B. Pearson Intl., there may be periods when ATC will be unable to approve use of the inst apch pro. Helicopters arr/dep via active rwy then taxi to/fr designated helicopter area btwn Golf & Bravo at Alpha. Acft with main gear track 18' and over use Rwy 15/33 then turn around bay and backtrack to twy D and apron.
CAUTION	Painted & lgtd twr 1696 ASL (400 AGL) aprx 4NM WNW. Narrow twys (18') exc twy D (24').

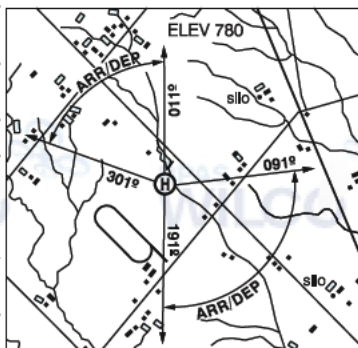
ONTARIO

AERODROME/FACILITY DIRECTORY

BRAMPTON (NATIONAL "D") ON (Heli)

CPC4

REF	N43 50 00 W79 42 03 8NE 10°W UTC-5(4) Elev 780' VTA A5000
OPR	National Helicopter Inc. 905-893-2727 Reg PPR
PF	B-1 C-2,3,4,5,6
FLT PLN	
FIC	London 866-WXBRIEF (Toll free within Canada) or 866-541-4104 (Toll free within Canada & USA)
HELI DATA	65' x 65' CONC/ASPH 85' x 85' Rstd max heli length 43.3'
LIGHTING	RY (FH)
PRO	Arr/dep btwn 301°-011° & 091°-191° fr heli.



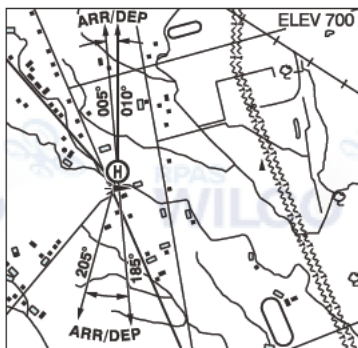
ONTARIO

AERODROME/FACILITY DIRECTORY

BOLTON ON (Heli)

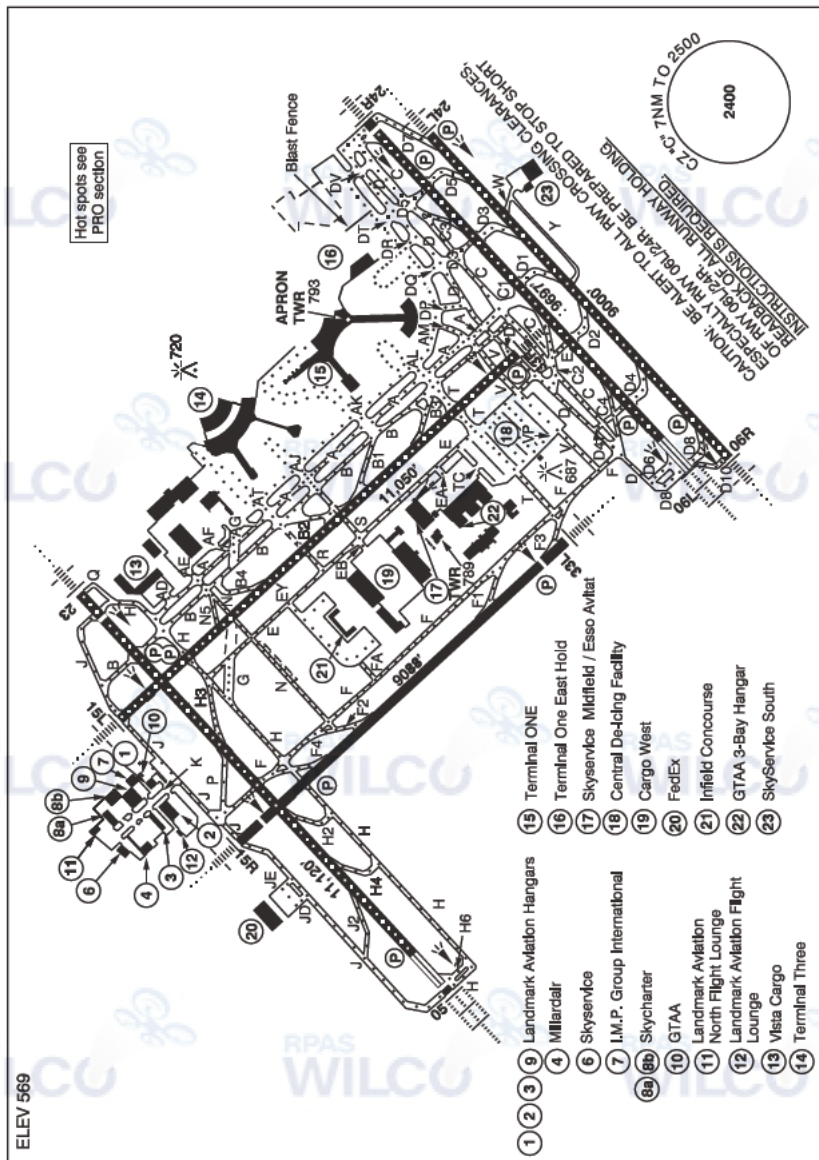
CNB2

REF	N43 51 08 W79 41 41 2SE 10°W UTC-5(4) Elev 700' VTA A5000
OPR	National Helicopter Inc 905-893-2727 Cert PPR
PF	B-1 C-2,3,4,5 D-6
FLT PLN	
FIC	London 866-WXBRIEF (Toll free within Canada) or 866-541-4104 (Toll free within Canada & USA)
ACC	Toronto 905-676-4590
SERVICES	
FUEL	JA, 100LL
HELI DATA	FATO 100' x 100' GRASS Safety Area 100' x 100' Max heli overall length 44.1' Parking Pad 1: 60' dia ASPH Max heli overall length 60' Parking Pad 2: 38' dia ASPH Max heli overall length 38' Parking Pad 3: 38' dia ASPH Max heli overall length 38' Parking Pad 4: 38' dia ASPH Max heli overall length 38'
RCR	Opr
LIGHTING	RF(FH) RW(ME) green
COMM	
ATF	tfc 123.2 5NM 3700 ASL
PRO	Arr/dep btwn 005° to 010° & 185° to 205° fr N43 51 08 W79 41 41, slope 8% (H3).



TORONTO / LESTER B. PEARSON INTL ON

CYYZ



REF	N43 40 34 W79 37 50 Adj W 10°W UTC-5(4) Elev 569' VTA A5000 LO6 H15 T2 CAP OC
OPR	Greater Toronto Airports Authority 416-776-3056 www.torontopearson.com/en H24 Cert Ldg fees
PF	A-1,2,3,5,6,7 C-4

ONTARIO

AERODROME/FACILITY DIRECTORY

TORONTO / LESTER B. PEARSON INTL ON (Cont'd)

CYYZ

CUST	AOE 888-226-7277 General aviation aircraft must clear customs at the fixed base opr of their choice. Ramp charges may apply.
FLT PLN	Pilots to open/close VFR Flt Pln with London FIC via phone or London rdo 123.275 when practicable.
FIC	London 866-WXBRIEF (Toll free within Canada) or 866-541-4104 (Toll free within Canada & USA)
WX	METAR H24. TAF H24, issue times: 00, 03, 06, 09, 12, 15, 18 & 21Z.
ACC	Toronto 905-676-4590/4591/4592 or 888-217-1241. Flt pln by Fax at 905-676-5044 & include phone numbers where pilot can be reached prior to dep.
DUAT	Esso Avitat; Landmark Aviation; Skycharter
SERVICES	
FUEL	JA, JA-1 (FSII avbl), JB, HPR
OIL	All
S	1,2,3
ARFF	DESIGNATED CAT 9
SUP FL	D & A-ice, LHOX
JASU	CE16
PVT ADV	Landmark Aviation 122.95 H24; Skycharter Ltd 129.75 1130-08Z† Skyservice/Esso Avitat 128.95 H24
MIL CON	Signature Flight Support (Shell) 905-677-5777

ONTARIO

AERODROME / FACILITY DIRECTORY

TORONTO / LESTER B. PEARSON INTL ON (Cont'd)

CYYZ

RWY DATA	<p>Rwy 15L(147°)/33R(327°) 11,050x200 ASPH Rwy 15R(147°)/33L(327°) 9088x197 ASPH Thlds 15R & 33L displ 588 Rwy 05(057°)/23(237°) 11,120x200 ASPH Thld 05 displ 135' Thld 23 displ 686' Rwy 06L(057°)/24R(237°) 9697x197 ASPH Thld 24R displ 197' Rwy 06R(057°)/24L(237°) 9000x197 ASPH RESA: All Rwys 492' Departures from holding bay inner centerlines Rwy 06L/D6, 24R/C5 and 05/H6 subtract 263' from declared distances.</p>
RWY CERT	<p>Rwy 15L RVR 1200(1/4sm)/Rwy 33R RVR 600 AGN V Rwy 15R RVR 1200(1/4sm)/Rwy 33L RVR 1200(1/4sm) AGN V Rwy 05 RVR 600/Rwy 23 RVR 1200(1/4sm) AGN V Rwy 06L RVR 600/Rwy 24R RVR 1200(1/4sm) AGN V Rwy 06R RVR 1200(1/4sm)/Rwy 24L RVR 1200(1/4sm) AGN V</p>
TWY CERT	<p>Twy K AGN IV Twy: W, Y AGN IIIB</p>
TWY	<p>Twy D4, D5 south of rwy 06L/24R: Angled rwy hold positions in effect. Twy K is <u>uncontrolled</u> & is rstd to acft with wingspans 41.15m/135' (B757W) or less & an Aircraft Load Rating of 9.0 or less. Other acft may be auth with prior appr from opr. Design spd for C2, B2, H3, D1, D2, D3, D4, D5, D7 & D8 is 50 kt (93 kph). Design spd for J2, F1, F2, F3 & F4 is 45 kt (85 kph). All other rapid exits designed for an exit speed of 35 kt (65kph). Normal Rwy 23 deps are from Twy "H". Rwy 23 deps do not enter Twy "Q" without specific clearance from ATC. Acft requiring full length must notify gnd ctl on initial contact. During CAT II/III arrivals 05 departures shall be from H6 Twys W & Y rstd to acft with wingspans less than 36m.</p>
APRON	<p>At all T1, T1 East Hold, T3, Infield & FedEx Apron/Parking areas, all acft must contact the applicable Apron Advisory prior to engine start at gate, pushback or taxi. FedEx Apron rstd to acft w h wingspans 51.9m/170' or less. Taxilane between 3C and 4C rstd to acft with wingspans less than 36m. Wingspans of 64.9m/213' permitted to Gate C27 Code E. Asphalt apron sfc E of positions 5G and 6F to 101A rstd to acft with wingspans 28.4m/93' (DH8-400) or less & an acft load rating of 9.0 or less. Outer/East loop btwn 7E-8E rstd to acft with wingspans less than 36m and Inner/East loop btwn 7D-8D rstd to acft with wingspans 79.9m/262' or less. Simultaneous use of lane 7 & 8 max wingspan 64.9m/213' Code E. Outer/North loop btwn 9C-9D-10D-10C restricted to acft with wingspans less than 36m. Strict adherence to Taxilane centerline required between DR and DV and on Taxilanes 10 through 13E. Taxilane 10 rstd to aircraft with wingspans 50.9m/167' or less. Refer to CAP parking areas (Terminal 1 and Terminal 1 East Hold) for details. Proceed only to gates assigned by Apron Advisory.</p>
RCR	<p>Opr CRFI, PLR/PCN</p>
LIGHTING	<p>05-AL(TE HI A TDZL) P3, 23-AN(TE HI A) P3 06L-AL(TE HI A TDZL) P3, 24R-AW AS(TE HI A) P3 06R-AN(TE HI A) P3, 24L-AN(TE HI A) P3 15R-AN(TE HI) P3, 33L-AN(TE HI) P3 15L-AN(TE HI A) P3, 33R-AN(TE HI A) P3</p>

ONTARIO

AERODROME / FACILITY DIRECTORY

TORONTO / LESTER B. PEARSON INTL ON (Cont'd)

CYYZ

COMM

RCO London rdo 123.275 (FISE)
 120.825 133.1
ATIS
CLNC DEL 121.3 all dep acft ctc clnc del dur 12-04Z†
APRON ADV North apron 122.275 (122.825)
 South apron 122.075 (122.825)
 A-CDM Coordinator 122.875 (122.825)
 Apron Tow Coordinator 136.525
 FedEx, Infield Concourse, Cargo West 122 275 (North apron),
 Skyservice/Avitat, 3 Bay Hgr Aprons 122.075 (South apron).
GND 119.1 121.65 121.9
TWR Toronto 118.35 118.7 (E) (emerg only 905-676-3588)
ARR 124.475 125.4 132.8
DEP 127.575 128.8
VFR ADV 119.3 133.4

NAV

VOR/DME YYZ 112.15 Ch 58(Y) N43 39 29 W79 37 53 (561')
 PEARSON YTP 116.55 Ch 112(Y) N43 40 18 W79 39 50 (595')
DME IDP 111.95 Ch 56(Y) N43 39 41 W79 37 12 (552')
 IJS 109.1 Ch 28 N43 39 44 W79 37 10 (551')
 INV 109.3 Ch 30 N43 40 33 W79 35 58 (565')
 ITO 110.95 Ch 46(Y) N43 40 13 W79 38 03 (572')
ILS ICV 111.95 (Rwy 06R) RVR LOC reliable only within 10° either side of centreline;
 IDP 111.95 (Rwy 24L) RVR LOC reliable only within 10° either side of centreline;
 IJS 109.1 (Rwy 06L) RVR LOC reliable only within 10° either side of centreline;
 ILP 110.95 (Rwy 15R) RVR LOC reliable only within 10° either side of centreline;
 INV 109.3 (Rwy 24R) RVR LOC reliable only within 10° either side of centreline;
 ITO 110.95 (Rwy 33L) RVR LOC reliable only within 10° either side of centreline;
 ITX 109.7 (Rwy 05) RVR LOC reliable only within 10° either side of centreline;
 ILE 110.3 (Rwy 33R) RVR LOC reliable only within 10° either side of centreline;
 IRW 110.5 (Rwy 15L) RVR LOC reliable only within 10° either side of centreline;
 IYZ 111.5 (Rwy 23) RVR LOC reliable only within 10° either side of centreline

ONTARIO

AERODROME / FACILITY DIRECTORY

TORONTO / LESTER B. PEARSON INTL ON (Cont'd)

CYYZ

RESTRICTIONS**OPERATING RESTRICTIONS**

The following restrictions are in effect:

1. All acft oprg on a scheduled and repetitive basis to/fr the A/D are rqr'd to obtain a slot for all ops.
2. Training flights are not permitted in the Toronto Control Zone from 0000-0700 local time. For other times, prior permission is required from National Traffic Management Unit (FLOW CTL) 800-268-4831 or 905-676-3528.
3. All maintenance runs/runups must be conducted in accordance with GTAA APRON & MAINTENANCE RUN PROCEDURES (avbl from opr-tel 416-776-3056). Upon approval contact Apron Coordinator frequency.
4. Airport Reservation Office (ARO) procedure for all General Aviation and Business Aviation acft oprg IFR & VFR flights. Operators must file a dep and arr reservation thru the Online Coordination System (OCS). Ctc ARO at 416-776-7568 or 1-800-267-7568 H24. More info avbl on www.torontopearson.com/aro

NOISE ABATEMENT RESTRICTIONS

Pursuant to CAR 602.105 and CAR 602.106, the following restrictions are in effect:

1. Noise abatement pro apply to all acft, (VFR & IFR) wx permitting 04-12Z±.
2. Arrivals and departures of acft are rstd as per the table below:

Aircraft	Restricted Hours - local time
Noise Certification or Type	Arrivals & Departures
I All non-noise certificated jet aircraft	2000 - 0800
II All ICAO annex 16, vol 1 chapter 2 & equivalent aircraft	0000 - 0700
III All ICAO annex 16, vol 1 chapter 3 & equivalent aircraft (subject to paragraph 4 or 5)	0030 - 0630
IV All other aircraft (subject to paragraph 4 or 5)	0030 - 0630

- a) Non-noise certificated jet powered acft are prohibited from departing on Runways 05, 06L, 06R, 15L, 15R and 33L.
 - b) Between 0000 and 0630 local time, departures are prohibited on Rwy 05, 06L, 06R, 15L and 15R and arrivals are prohibited on Rwy 24R, 24L, 23, 33R, 33L and 15R unless assigned by ATC.
 - c) All acft operating on a scheduled and repetitive basis are rqr'd to obtain an extension or an exemption to opr dur the rstd hrs. Submit req for oprg ext on the day of ops to the GTAA with justification at 416-776-3480 or 1-800-267-SLOT (7568), (fax 416-776-5552). For advance exemption requests or information, make submission in writing to the Manager, Slots & Capacity Allocation, Greater Toronto Airports Authority, Toronto Pearson International Airport, P.O. Box 6031, Toronto AMF, Ontario, L5P 1B2 (fax 416-776-3483).
 - d) **All other ops are rqr'd to obtain permission to opr dur the rstd hrs** by contacting the GTAA on the day of operation at 416-776-3480 or 1-800-267-SLOT (7568), (fax 416-776-5552).
3. VFR acft 04-12Z±: climb rwy hdg to 3600 ASL. When wx does not permit climbing to 3600 ASL, climb rwy hdg to max alt allowed by rules for VFR flt in controlled airspace.

ONTARIO

AERODROME / FACILITY DIRECTORY

TORONTO / LESTER B. PEARSON INTL ON (Cont'd)

CYYZ

PRO

Pilots should refer to Canadian Airport Charts (CAC) to obtain details on established hot spots, prior to operating on maneuvering areas. CAC are available for free on the NAV CANADA website.

IFR CLEARANCE ACKNOWLEDGEMENT

Acknowledgment of IFR clncs with Toronto twr clnc del shall include the acft call sign, transponder code & name of SID pro hat was assigned in the IFR clnc.

When informed by ATIS or by the arr controller that simultaneous ILS apchs are in progress, pilots shall advise the arr controller immediately of any avionics unsvc or if unable to comply. In VFR wx acft may be vectored to intercept the lczr at a point above the GP.

Clnc to opr within the Toronto class C airspace will only be given to acft equipped with functioning transponder & mode C unless prior approval obtained from ATC 905-676-4509 (IFR acft) or 3589 (VFR acft).

Multilateration: Pilots must keep their transponder on at all times when maneuvering on the aprt, turned on prior to brake release and on arrival, on until final engine shutdown. Pilots that do not have a transponder code issued by ATC must squawk 1000 when taxiing.

CROSSWIND CONDITIONS

Anticipate landing 05/23 & 06L/24R in crosswinds up to 30 kt at 90°.

DURING SNOW CLEARING OPERATIONS

Acft should be prepared to dep from any rwy (incl 06L & 06R).

DE-ICING OPERATIONS

CENTRAL DE-ICING FACILITY (CDF)

OVERVIEW

All de-icing ops are performed with acft engines oprg, unless otherwise advised by Pad Control or ICEMAN.

Pad 1 & 5

- Centre lane will accommodate all acft.
- Acft with wingspans less than 36m may use North/South lanes.

Pad 2, 3, 4 & 6

- Centre lanes will accommodate acft with wingspans 64.9m/213ft and smaller.
- Acft with wingspans less than 36m may use North/South lanes.

1. Prior to depart ing Parking Position, ctc CLNC DEL/APRON/GND (as applicable) and advise, "ACFT DE-ICING REQUIRED".
2. On Twys T,V and E, hold short of ICE# and when directed by Ground Control monitor Pad Control on 131.17. Follow Pad Control taxi instructions to the entrance of the de-icing pad.
3. When directed by Pad Control ctc ICEMAN on the assigned freq (129.62 or 131.37).
4. Follow verbal instructions, guidance displays and lights (as applicable) into staging and/or de-icing bays.
5. Once acft is in final stop position, brakes are set and acft configured for de-icing, ctc ICEMAN and advise, "BRAKES SET, ACFT CONFIGURED, READY TO DE-ICE". At his time, pass along any specific fluid and/or treatment requirements.
6. After de-icing, do not move acft. Ctc Pad Control on 131.17 when instructed by ICEMAN to obtain taxi instruction.
7. Follow Pad Control instruction to designated exit points. When instructed by Pad Control ctc Ground Control on assigned freq.
8. Specific acft operations plan in effect for acft with wingspans 65m/214ft up to 79.9m/262ft. Restrictions in place include:

- For Central De-icing Facility (CDF) operations, no turns from Twy E into any of the de-icing pads are permitted. The only taxi routes permitted for de-icing are via Twy T into Pad 5 and via Twy V into Pad 1.